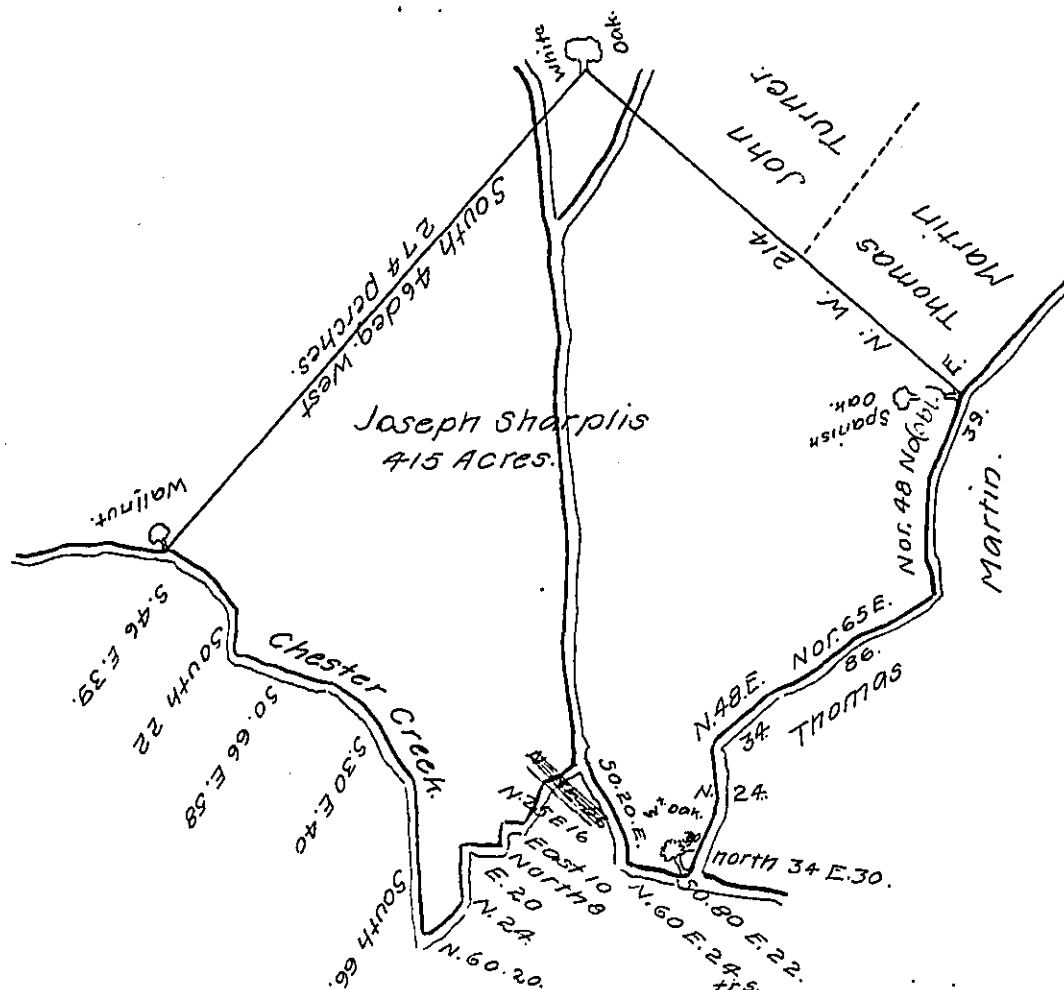


The closing is good
& the quantity is 5+



These may Certify that Pursuant to the Proprietors Commissioners Warrant dated ye 15th of ye 10th Moneth And by Virtue of a Warrant from Edward Penington 1702 I Resurveyd for Joseph Sharplis a tract of Land situate in Middle-Town Township in ye county of Chester Begining at a spanish oak by ye side of a Run by Thomas Martins Land thence North West 214 perches in the Line of Tho. Martin and John Turner to a White oak thence south 46 deg. west 274 perches to a Walnut Tree by Chester Creek thence down ye sd Creek

S. 46 East 39 perches.
South 22
So. 66 East 58
So. 30 East 40
South 66
North 60 East 20
North 24
East 20
North 8
East 10
North 25 East 16
Nor. 60 East 24
So. 20 East 56
So. 80 East 22 to a white oak by ye Mouth of a Run.

Then up ye sd Run
Nor 34 East 30 perches
North 24
Nor 48 East 34
North 65 East 86
North — 48
North 24 East 39 per. to ye first Mentioned Spanish Oak Containing 415 Acres Resurveyd ye 14th month 1702
By Me Isaac Taylor
Surveyor of Chester County.

IN TESTIMONY that the above is a copy of the original remaining on file in the Department of Internal Affairs of Pennsylvania, made conformably to an Act of Assembly approved the 16th day of February 1833, I have hereunto set my hand and caused the Seal of said Department to be affixed at Harrisburg, this eleventh day of January, 1908.

Henry Hoover
Secretary of Internal Affairs.